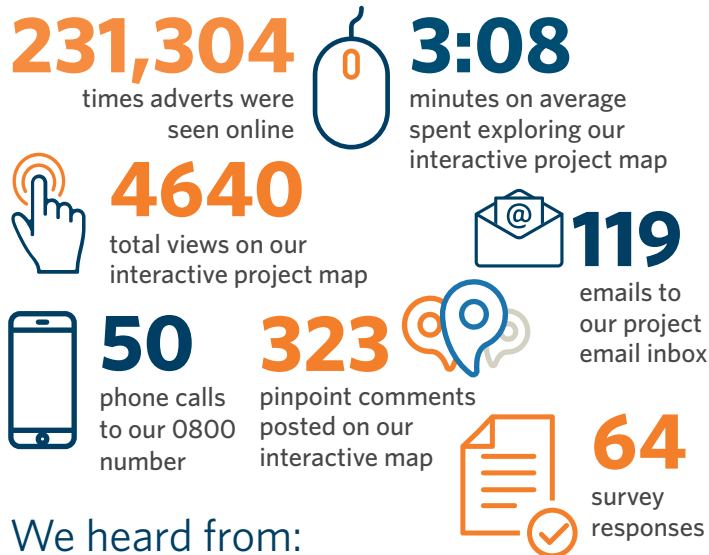


# Whakarāpopoto o ngā whakaurunga

## Summary of public engagement



Between 2-23 October 2020, Waka Kotahi NZ Transport Agency asked for your feedback on two shortlisted route options for four-laning between Whangārei and Port Marsden Highway. Locals know their roads best, so we wanted to hear what you think about the shortlisted options and how you move through this section of State Highway 1. Your feedback is helping us to identify an emerging preferred corridor.



### We heard from:

- Residents and residents' associations
- Local and regional road users
- Business owners
- Property owners
- Environmental advocacy groups
- Transport advocacy groups
- Community groups
- Treaty partners

### COVID-19 CHANGED HOW WE ENGAGED WITH YOU AND COLLECTED YOUR FEEDBACK

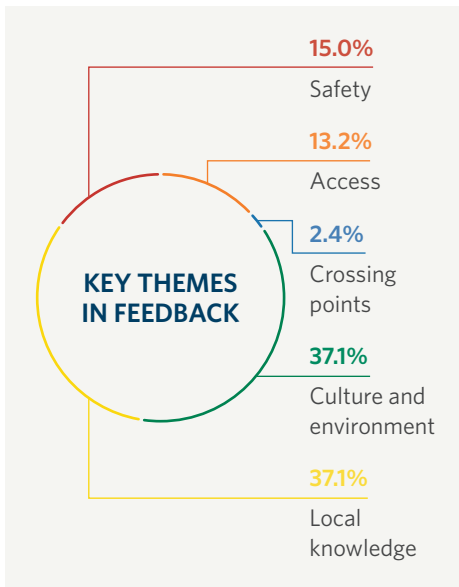
Government measures to manage COVID-19 cast uncertainty around meeting in large groups at community open days and drop-in sessions, so we moved our engagement online and ensured we were contactable via email or freephone.

#### How we told you about our public engagement:

- Online advertising, seen over 230,000 times
- Approximately 500 information brochures posted to property owners within an identified study area
- Brochures distributed to community hubs and public venues across the Whangārei district
- Media release to invite feedback on shortlisted options
- Two e-newsletters to our project subscriber list
- Project webpage updates including a link to the brochure and to the online feedback platform
- Facebook post on Waka Kotahi's Northland page
- Social Pinpoint - a online feedback platform with an interactive project map.

## New Zealand Upgrade Programme

The Whangārei to Port Marsden Highway project is being funded as part of the NZ Upgrade Programme which is investing \$6.8 billion in infrastructure projects across New Zealand to save lives, get our cities moving and boost productivity in the country's growth areas. To find out more about the NZ Upgrade programme, visit: [www.nzta.govt.nz/nz-upgrade](http://www.nzta.govt.nz/nz-upgrade)




*'Developing our transport links, which will last decades, needs to take into account the environmental services provided by the areas traversed.'*



*'Four-laning is necessary to accommodate current and projected growth in Northland but smooth traffic flow might be impeded by pedestrian crossings and traffic lights.'*



*'The coastal environment, particularly mangroves are so important for filtering nutrients and providing nursery habitats. We should do everything we can to protect them.'*

## You said, we will

**You said, 'Many properties will be impacted by this project.'**

**We will** continue to communicate directly with landowners as the project develops so that we can identify and manage any potential impacts to individual properties directly.

**You said, 'Safe access onto the highway from several local roads will need to be considered.'**

**We will,** investigate safer ways for everyone to use the upgraded highway including access from local roads and driveways. The four-lane highway will have a centre median barrier, which will limit right turns onto the highway. This might mean a change in how you currently access your property and local roads. There will be further opportunities to give us your feedback on these design elements as the project develops.

**You said, 'There are environmental impacts to be considered for both options A and E; the coastal marine environment at Oakleigh as well as forest land and local wildlife need to be conserved.'**

**We will** work to protect and enhance the natural environment by collaborating with environmental regulatory and advocacy groups as well as assessing and mitigating the ecological impacts of our work. We will continue to communicate with the public on what we're doing to protect the environment and you will have the opportunity to share your thoughts with us as well.

**You said, 'Is there iwi/hapū engagement on this project?'**

**We will** work with our Treaty partners to provide opportunities to exercise kaitiaki responsibilities and continuously keep mana whenua involved as the project develops.

**You said, 'There will be adverse traffic impacts during the construction period - how can these be minimised?'**

**We will** complete construction in stages and work to ensure the state highway keeps moving with minimal disruption. We aim to keep road users informed on journey times, alternative routes and road works while the project is in construction.

**You said, 'I didn't get a chance to give feedback during the consultation period. I hope there will be further opportunities to provide feedback as the project develops.'**

**We will** continue to share project information as well as opportunities for you to provide feedback to us. Engagement with our partners, stakeholders and local communities is key to the successful delivery of the Whangārei to Port Marsden Highway project. We expect to have another round of public engagement on the emerging preferred corridor in early 2021, including community events.

## Next steps

The next steps for this project are to identify the emerging preferred corridor and then to progress through further assessments, ground investigations and landowner consultation.

We are planning to lodge the Notice(s) of Requirement and resource consent applications in late-2021/early-2022, followed by procurement for construction and detailed design.

Construction will begin late-2023/early-2024 and will be completed in stages by 2028.

Kei te kaha mātou ki te mahi me ō mātou hapori katoa. Ki te hiahia koe i ēnei mōhiohio i whakamāoritia ki te reo Māori, whakapā mai i konei: [w2pmh@nzta.govt.nz](mailto:w2pmh@nzta.govt.nz)



For more information, visit the project webpage or contact the project team.

[w2pmh@nzta.govt.nz](mailto:w2pmh@nzta.govt.nz)

[www.nzta.govt.nz/w2pmh](http://www.nzta.govt.nz/w2pmh)

0800 948 342